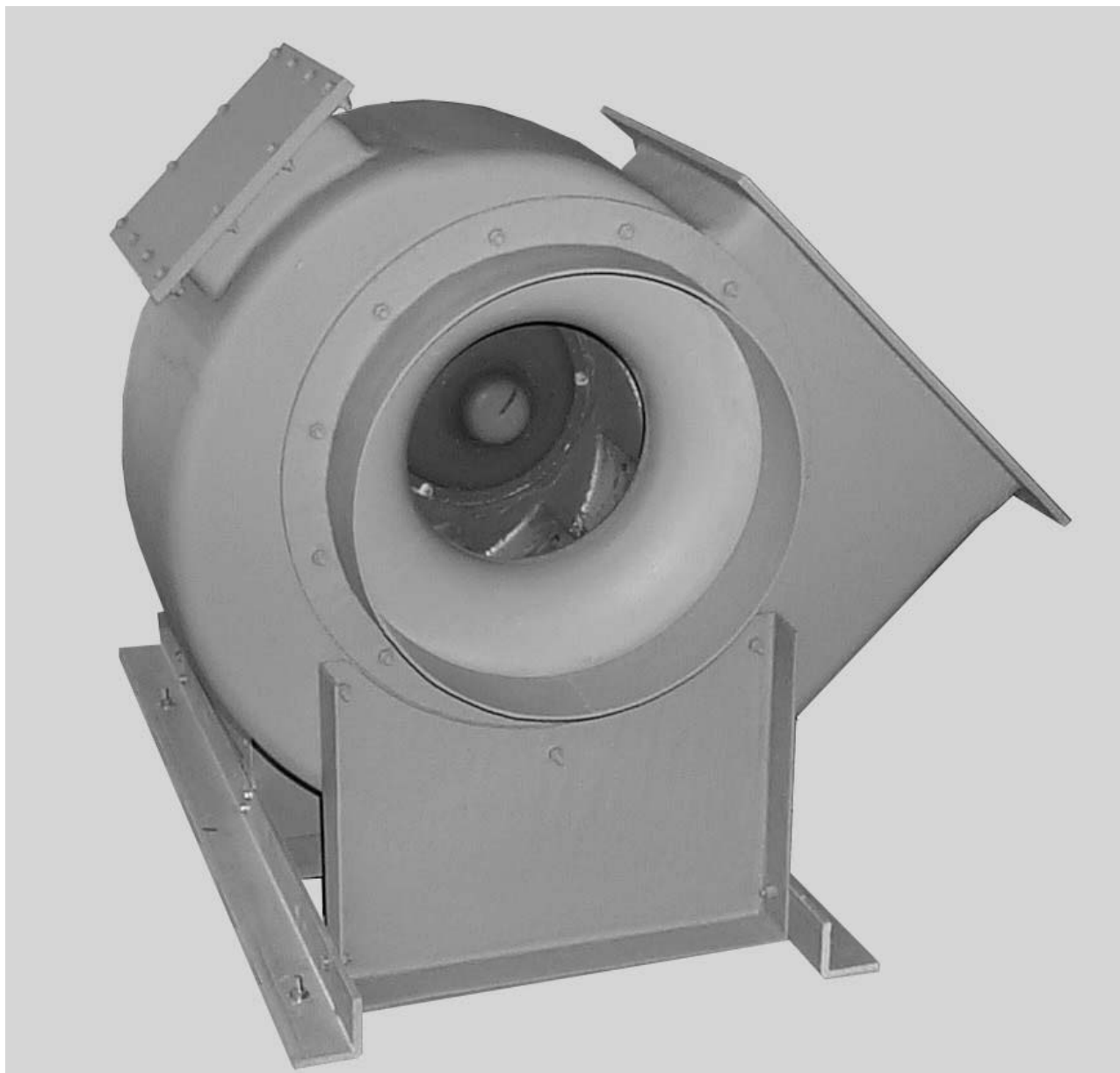


Fiberglass Backward Incline Centrifugal



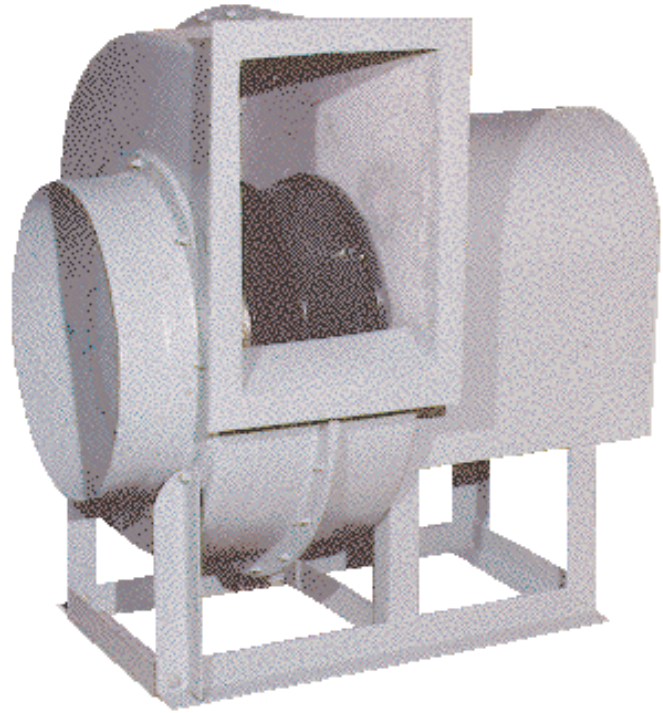
 **Polymil Products, Inc.**

51 North St. / P.O. Box 125 Le Roy, NY 14482
Phone (585) 768-8170 Web Site: www.polymil.com
Fax (585) 768-7830 Email: sales@polymil.com

Backward Incline Centrifugal Features

Features

- **Sizes: Model BIC:** 10" through 36".
- **Housing:** Fiberglass, Hetron 99P ® polyester resin, Class 1 flame spread of 25. Standard color is gray.
- **Wheel:** Backward curve non-overloading design. Fiberglass, Hetron FR992 ® vinyl ester resin, Class 1 flame spread of 25. Metal hub insert is completely encapsulated in fiberglass. Fiberglass cap protects taperlock bushing. Final resin rich coat is applied for increased corrosion resistance.
- **Base:** Sizes 12" thru 18" have a solid fiberglass base and motor supports. Sizes 22" thru 36" have a heavy gauge all-welded steel base which is treated, primed and epoxy coated.
- **Shaft:** Steel, turned, ground and polished. Shaft is completely encapsulated with a fiberglass sleeve where it penetrates the housing.
- **Shaft Seal**
- **Hardware:** 304 stainless steel.
- **Inlet:** Slip fit style.
- **Outlet:** Flanged.
- **Drain:** 1" threaded PVC drain mounted on the lowest point of the scroll.
- **Motor Cover:** Fiberglass construction, provided as standard on drive arrangement 10 fans. Protects shafts, bearings, drive and motor.
- **Drive:** Adjustable sheave on units with a 1 - 3 HP motor. Fixed sheave on units with a 5 HP and above motor. 1.5 SF V-belts.

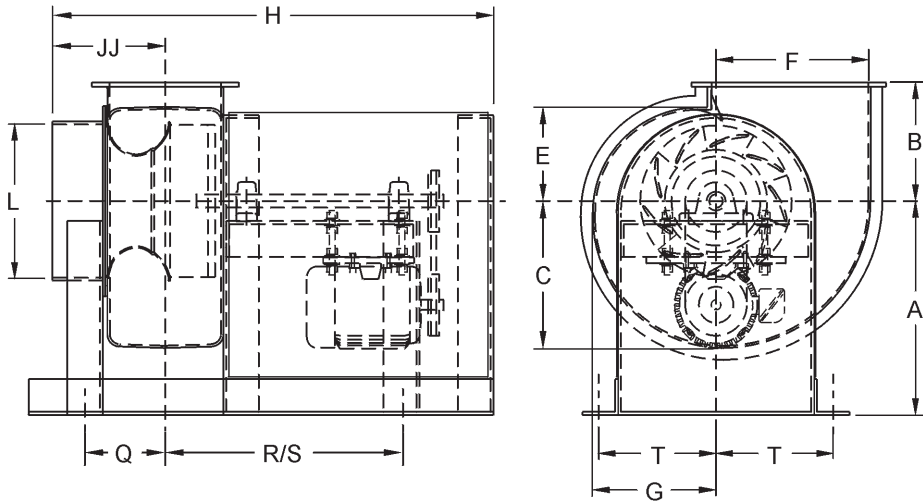


Accessories

- **Spark Resistant Construction:** Includes carbon veil, graphite impregnation and static grounding lugs to make unit electrically conductive, limiting the possibility of a static charge.
- **Special Resins:** A variety of special resins are available to suit a specific corrosive application.
- **Surface Veil:** Synthetic surface can be applied to all airstream surfaces to increase corrosion resistance of the fan.
- **Shaft:** Available in 304 or 316 stainless steel.
- **Hardware:** Available in 316 stainless steel.
- **Base:** Sizes 22" thru 36", sandblasted to a white metal, primed and epoxy coated.
- **Vibration Isolators:** Rubber-in-shear or spring type.
- **Access Door:** Allows access to interior of housing, Neoprene gasketed.
- **Flanged Inlet:** For flanged attachment to inlet duct.
- **Outlet Damper:** Fiberglass parallel blade, manual control damper with fiberglass hand quadrant to control air flow. Fiberglass automatic backdraft dampers also available.
- **Inlet Vane Dampers:** Fiberglass construction with manual quadrant for control of air flow.
- **Inlet Box:** Fiberglass construction, drilled and gasketed for field attachment to fan inlet.

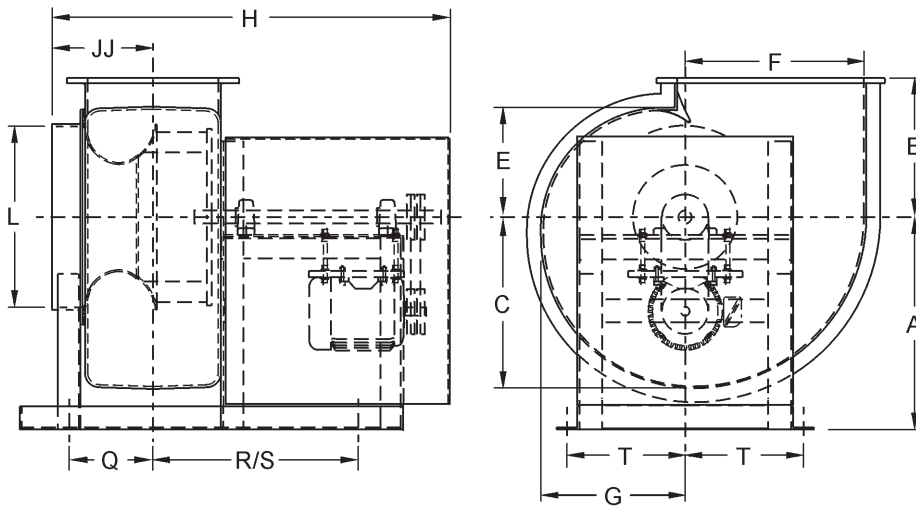
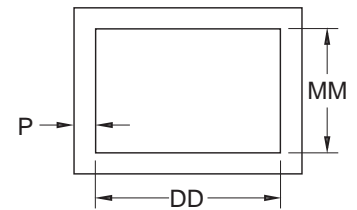


Backward Incline Centrifugal Dimensions



Sizes
10" - 18"

Outlet Detail



Sizes
22" - 36"

Size	10"	12"	15"	18"	22"	24"	27"	30"	33"	36"
A	18	18	20-1/4	24-1/4	28	30	36	36	40	45
B	8-5/16	10	12-1/2	15	18-5/16	20	22-1/4	25	27-1/2	30
C	10-5/16	12-3/8	15-1/2	18-9/16	22-11/16	24-11/16	27-7/8	30-15/16	34	37
DD	11-1/8	13-3/8	16-11/16	20-1/8	24-9/16	26-3/4	30-1/8	33-3/4	36-3/4	40-1/8
E	6-9/16	7-7/8	9-7/8	11-7/8	14-7/16	15-3/4	17-3/4	19-11/16	21-3/4	23-5/8
F	10-5/8	12-13/16	16	19-1/4	23-1/2	25-5/8	28-7/8	32	35-1/4	38-5/8
G	8-5/8	10-3/8	12-15/16	15-1/2	19	20-5/8	23-1/4	25-15/16	28-3/8	31-1/8
H	35	37-1/8	41-7/8	47-5/8	51-7/8	55-1/4	64-7/8	68-1/8	74-5/8	78-7/8
JJ	8-3/16	9-1/2	10-3/4	12	12-3/4	14-1/2	18	20	21-1/2	23
L	11	13	15-3/4	20	24	28-1/2	30-1/8	32-1/2	37-3/4	39-1/2
MM	7-13/16	9-3/8	11-11/16	14	17-3/16	18-3/4	21-1/8	23-1/2	25-7/8	28-1/8
P	2	2	2	2-1/4	2-3/4	3	3/3/8	3-3/4	4-1/8	4-1/2
Q	5-7/8	6-3/4	7	9	11	12	13	13	18	20
R/S	20	20	23	26	27	29	35	35	40	40
T	9-7/8	9-7/8	10-5/8	12-5/8	15-9/16	16-5/8	19-3/16	21	22-5/8	24-3/8

Specifications

Furnish _____ each, size _____, Model BI as manufactured by Polymil Products, Inc.

Fan shall be suitable for Class II operation.

Housing shall be constructed of Hetron 99P® polyester resin with a Class 1 flamespread of 25 or less.

Fan wheel shall be constructed of fiberglass using Hetron 992 FR® vinyl ester resin and attached to shaft by a taperlock bushing. The bushing shall be protected by a fiberglass cover. Fan shaft shall be of carbon steel with a fiberglass sleeve where the shaft enters the fan housing and a shaft seal.

The fan shall have a capacity of _____ CFM at _____ inch(es) static pressure standard air and equipped with a _____ HP, _____ RPM, motor. It shall be NEMA design B, heavy duty, industrial continuous duty,

totally enclosed fan cooled and suitable for _____ volt, _____ phase, _____ cycle operation.

The bearings shall be self-aligning block type. Unit shall be equipped with a (fixed, adjustable) v-belt drive selected with a 1.5 service factor.

Motor and drive shall be protected by a fiberglass motor cover.

All hardware shall be (304SS, 316SS).

Available accessories include: carbon impregnation with static grounding, surface veil, vibration isolators (rubber-in-shear, spring type), gasketed access door, fiberglass flanged inlet, fiberglass manual control outlet damper, fiberglass inlet vane dampers with manual quadrant, fiberglass inlet box.



51 North Street/P.O. Box 125

LeRoy, NY 14482

Phone: (585) 768-8170 Fax: (585) 768-7830

Visit our website at: www.polymil.com

Email us at: sales@polymil.com