

# *Fiberglass Inline Centrifugal*



---

 **Polymil Products, Inc.**

51 North St. / P.O. Box 125 Le Roy, NY 14482  
Phone (585) 768-8170 Web Site: [www.polymil.com](http://www.polymil.com)  
Fax (585) 768-7830 Email: [sales@polymil.com](mailto:sales@polymil.com)

# Inline Centrifugal Features

## Features

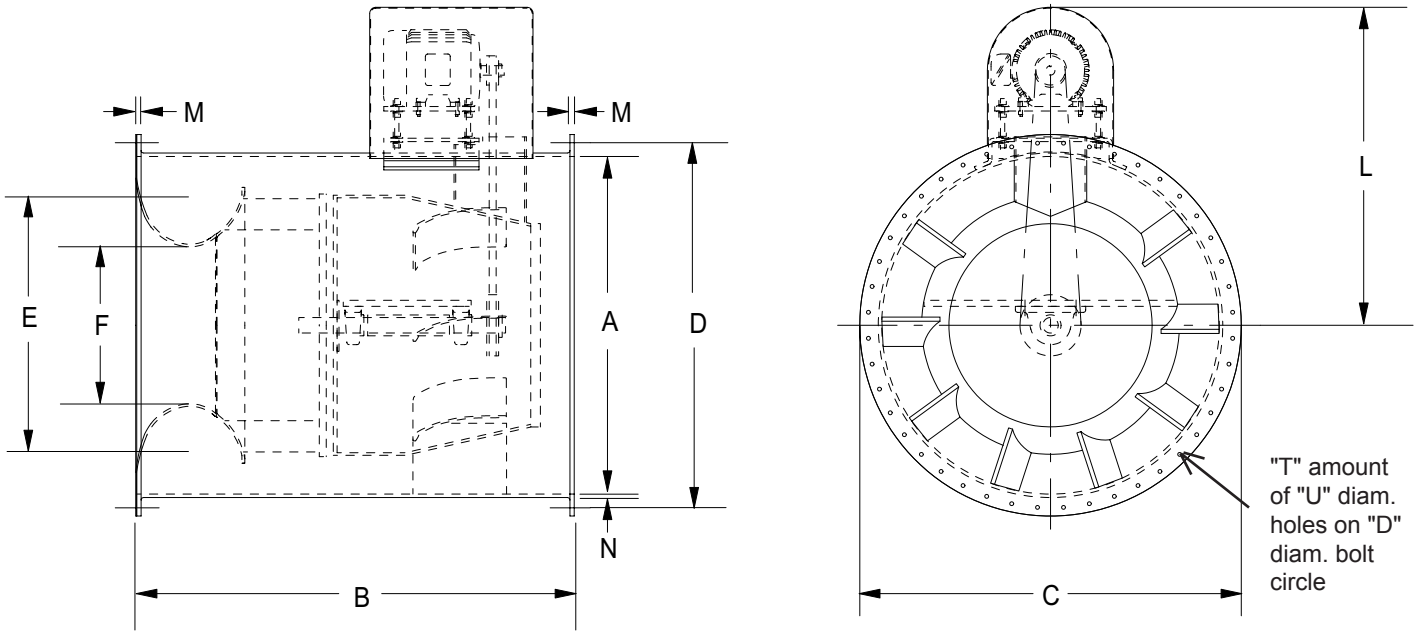
- **Sizes: Model ILC:** 10" thru 36".
- **Housing:** Fiberglass, Hetron 99P ® polyester resin, Class 1 flame spread of 25, urethane enamel finish coat. Standard color is gray.
- **Wheel:** Backward curve non-overloading design. Fiberglass, Hetron FR992 ® vinyl ester resin, Class 1 flame spread of 25. Metal hub insert is completely encapsulated in fiberglass. Fiberglass cap protects taperlock bushing. Final resin rich coat is applied for increased corrosion resistance.
- **Shaft:** 304 stainless steel. Shaft is completely encapsulated with a fiberglass sleeve where it penetrates the wheel.
- **Shaft Seal:** Teflon.
- **Hardware:** 304 stainless steel.
- **Inlet/Outlet:** Flanged for duct attachment.
- **Motor Cover:** Fiberglass construction, provided as standard on drive arrangement 10 fans. Protects shafts, bearings, drive and motor.
- **Drive:** Fixed sheave, 1.5 SF v-belts.



## Accessories

- **Spark Resistant Construction:** Includes carbon impregnation and static grounding lugs to make unit electrically conductive, limiting the possibility of a static charge.
- **Special Resins:** A variety of special resins are available to suit a specific corrosive application.
- **Surface Veil:** Synthetic surface can be applied to all airstream surfaces to increase corrosion resistance of the fan.
- **Shaft:** Available in 316 stainless steel.
- **Hardware:** Available in 316 stainless steel.
- **Roof Mount:** Curb caps, stack caps, and intake/exhaust hoods in all fiberglass construction can be provided.
- **Horizontal Mounting Legs or Clips**
- **Vertical Mounting Legs or Clips**
- **Vibration Isolators:** Rubber-in-shear or spring type.
- **Access Door:** Allows access to interior of housing, gasketed.
- **Flanged Inlet:** For flanged attachment to inlet duct.
- **Inlet Vane Dampers:** Fiberglass construction with manual quadrant for control of air flow.

# Inline Centrifugal Dimensions



Size	10"	12"	15"	18"	22"	24"	27"	30"	33"	36"
A	14-1/16	16-7/8	21-3/32	25-5/16	30-29/32	33-3/4	37-31-32	42-3/16	46-13/32	50-5/8
B	24	24-1/2	30	36-1/16	43-7/8	48-1/16	53-11/16	60	66	72
C	18-9/16	21-3/8	25-19/32	29-13/16	35-13/32	38-1/4	42-31/32	47-3/16	51-13/32	55-5/8
D	17-1/16	19-7/8	24-3/32	28-5/16	33-29/32	36-3/4	41-15/32	45-11/16	49-29/32	54-1/8
E	10-3/16	12-1/4	15-5/16	18-3/8	22-7/16	24-1/2	27-9/16	30-5/8	33-11/16	36-3/4
F	6-5/16	7-9/16	9-1/2	11-3/8	13-15/16	15-3/16	17-1/16	19	20-7/8	22-3/4
L	*	*	*	*	*	*	*	*	*	*
M	3/8	3/8	3/8	3/8	1/2	1/2	1/2	1/2	1/2	1/2
N	1/4	1/4	1/4	1/4	5/16	5/16	5/16	3/8	3/8	3/8
T	8	8	20	20	24	24	24	36	36	36
U	7/16	7/16	7/16	7/16	7/16	7/16	7/16	7/16	7/16	9/16

\* Dimension varies with horsepower

# Specifications

Furnish \_\_\_\_\_ each, size \_\_\_\_\_, Model ILC as manufactured by Polymil Products, Inc.

Fan shall be suitable for Class II operation.

Housing shall be constructed of Hetron 99P® polyester resin with a Class 1 flamespread of 25 or less.

Fan wheel shall be constructed of fiberglass using Hetron 992 FR® vinyl ester resin and attached to shaft by a taperlock bushing. The bushing shall be protected by a fiberglass cover. Fan shaft shall be of carbon steel with a fiberglass sleeve where the shaft enters the fan housing and a shaft seal.

The fan shall have a capacity of \_\_\_\_\_ CFM at \_\_\_\_\_ inch(es) static pressure standard air and equipped with a \_\_\_\_\_ HP, \_\_\_\_\_ RPM, motor. It shall be NEMA design B, heavy duty, industrial continuous duty,

totally enclosed fan cooled and suitable for \_\_\_\_\_ volt, \_\_\_\_\_ phase, \_\_\_\_\_ cycle operation.

The bearings shall be self-aligning block type. Unit shall be equipped with a (fixed, adjustable) v-belt drive selected with a 1.5 service factor.

Motor and drive shall be protected by a fiberglass motor cover.

All hardware shall be (304SS, 316SS).

Available accessories include: carbon impregnation with static grounding, surface veil, vibration isolators (rubber-in-shear, spring type), gasketed access door, fiberglass flanged inlet, fiberglass manual control outlet damper, fiberglass inlet vane dampers with manual quadrant, fiberglass inlet box.



51 North Street/P.O. Box 125  
LeRoy, NY 14482

Phone: (585) 768-8170 Fax: (585) 768-7830

Visit our website at: [www.polymil.com](http://www.polymil.com)

Email us at: [sales@polymil.com](mailto:sales@polymil.com)